



Auto Spring Testing Machine

Model - STE-97050



Technical Description :

FIE' Spring Testing Machine Series STE-97050 are PLC Based Electro - Mechanical Machines with motorized cross head to study mechanical behavior of coil spring in tension and compression mode. These machines offer built in features to offer excellent standalone performance for standard tests and great flexibility for complex analysis.

Features :

- Precision stepper motor and drive with ball lead screw gives an advanced drive system with slow and rapid speeds
- PLC based instrumentation to measure, display & store load & displacement value.
- Provision for Load cell Interchangeability.
- Safety interlock for overload.
- Universal application in R & D, Education, Quality Control & Production for tension and Compression test in coil springs.

PLC based built in panel incorporating state of art technology with following features -

- 7" LCD front touch screen Display
- Data Entry of test parameters including pre-load, rupture %, safe load & specimen data etc.
- Online graph of load Vs. Displacement directly on screen.

- USB Printer port for Printer interface with graph and result print out.
- Facility to export the result/data in CSV format.

Load Cells :

'FIE' offers Strain gauge type universal load cells in different capacities in the following nominal ranges :

100N, 250N, 1kN, 2.5kN, 5kN as per customers requirement.

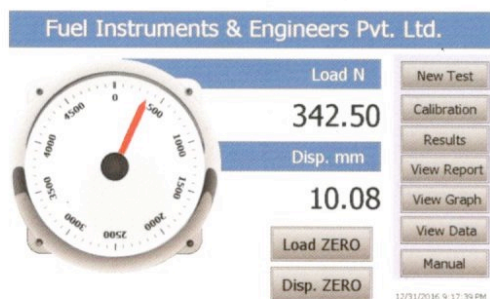
Grip and Clamping Devices :

- Compression Plates
- Tension Spring Adapters

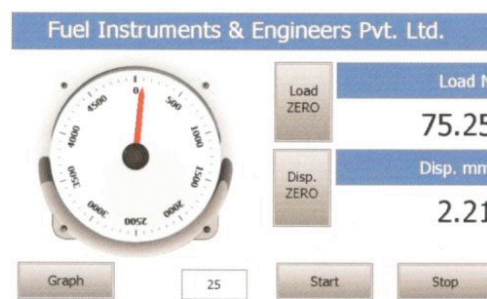
Specifications :

Load Range	0-5 kN
Load Resolution	1/20,000 of nominal load cell connected.
Load Measuring Accuracy	±1% from 2% to 100% of nominal load of load cell used
Max. Cross head Stroke	400mm Without grips, Compression Plates & Load cell
Cross head Displacement Resolution	0.01mm
Power Supply	230 VAC, 50 Hz, Single Phase

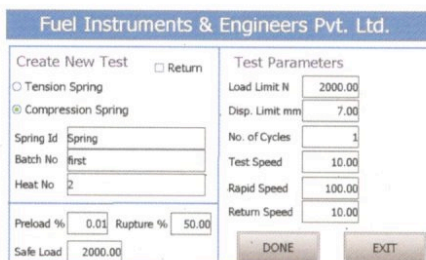
Built – In Electronic Control Panel :



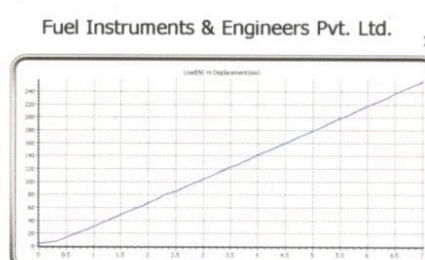
Home Screen



Test Reading Screen



Data Entry



Test Graph

Fuel Instruments & Engineers Pvt. Ltd. Plot No. 68-89, Parvati Co-op Indl. Estate, Yadav - Ichalkaranji 416115	
Spring Type :	
Spring Id :	Spring
Batch No. :	first
Heat No. :	2
Ultimate Load :	261.25000 N
Max Disp. :	6.54mm
Disp. at Fmax :	6.81mm
Spring Rate :	36.55761 N/mm ²

Test Result

CANAN TESTING SERVICES

Accredited by NABL (Dept. of Science & Technology-Govt. of India)

11, 1st Floor, Convenient Shopping Centre, Pocket-F, G.T.B Enclave, Nand Nagari, Delhi - 110093

Tel : +91-11-22580160 | +91-11-22583460 | +91-11-2594094

E-mail : canan@canantesting.com

Web : www.canantesting.com